

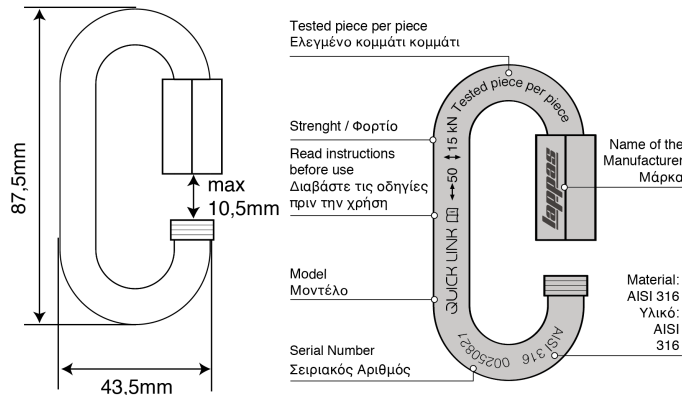
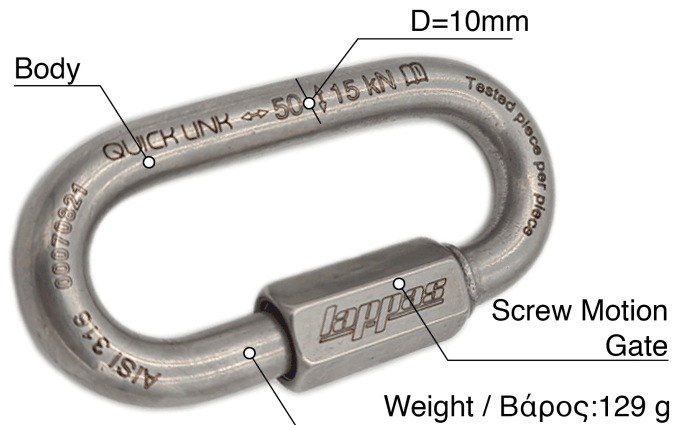


**Quick Link D10 (permanent connector)
Stainless Steel AISI 316**

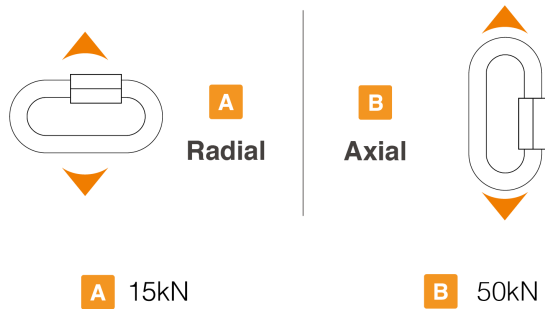
Μεταλλικός Σύνδεσμος D10-Ανοξείδωτο Ατσάλι AISI 316

**Technical Sheet (latest version)
Εγχειρίδιο Χρήσης (τελευταία έκδοση)**

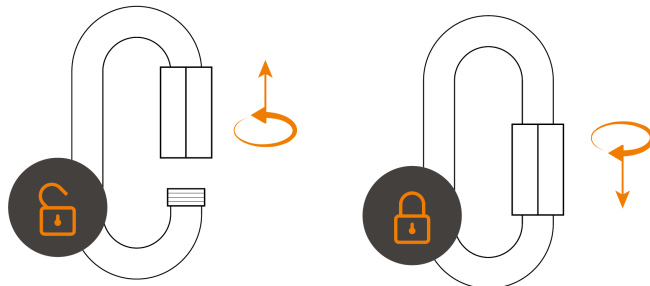
suitable for
κατάλληλο για



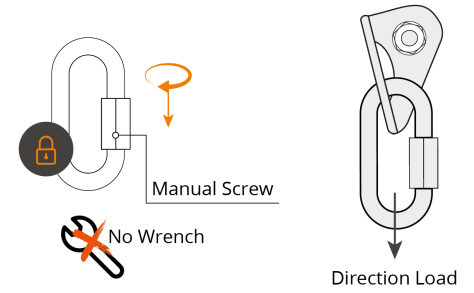
effective strenght / μέγιστη φόρτιση



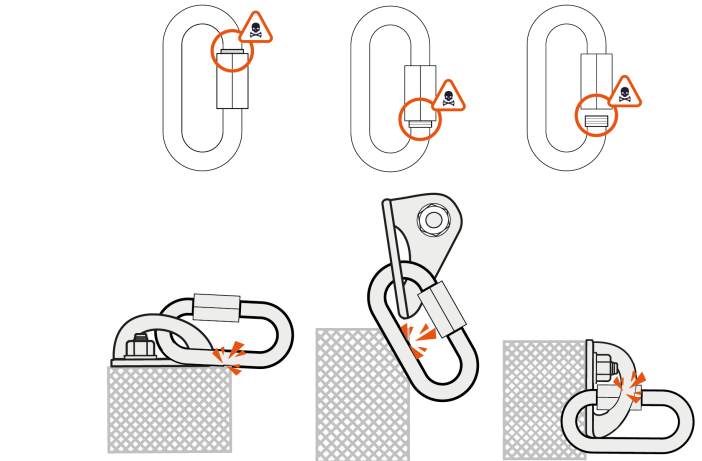
how to use / τρόπος χρήσης



APPROVED USE / ΟΡΘΗ ΧΡΗΣΗ



WARNING / ΠΡΟΣΟΧΗ



**ADDITIONAL INFORMATION
ΠΡΟΣΘΕΤΕΣ ΠΛΗΡΟΦΟΡΙΕΣ**

A. Lifetime Unlimited Lifetime	B. Acceptable T° +80°C/+176°F -40°C/-40°C	C. Cleaning +30°C/+86°F max.	D. Drying +30°C/+86°F max.	E. Maintenance
F. Precaution for Use etc..	G. Storage & Transport		I. FAG - Contact lappasclimbing.com	
H. Modifications & Repairs	Lappas S.A.			