

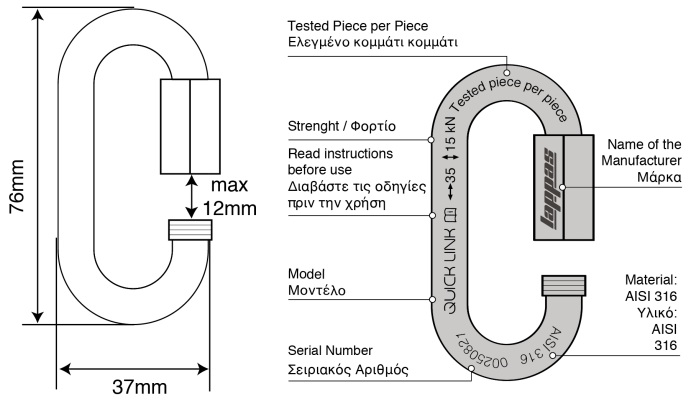
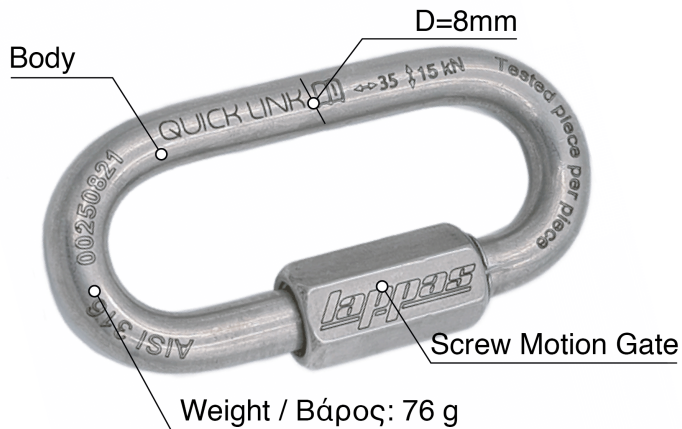


Quick Link D10 (permanent connector)
Stainless Steel AISI 316
 Μεταλλικός Σύνδεσμος D8-Ανοξειδωτο Ατσάλι AISI 316

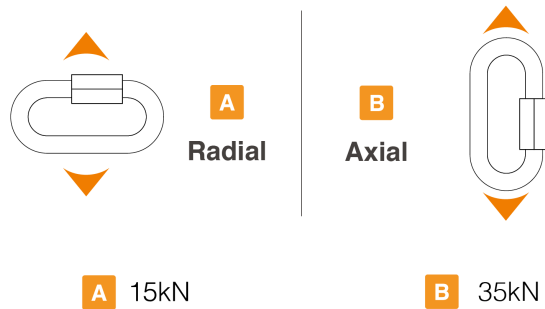
Technical Sheet (latest version)
 Εγχειρίδιο Χρήσης (τελευταία έκδοση)

suitable for κατάλληλο για

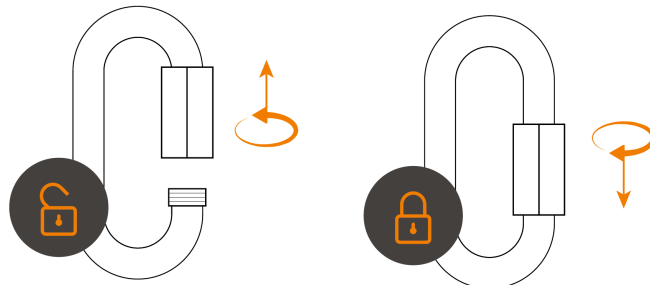
- outdoor (outdoor climbing)
- caving (caving)
- canyoning (canyoning)
- indoor (indoor climbing)
- rope access (rope access)
- rescue (rescue)



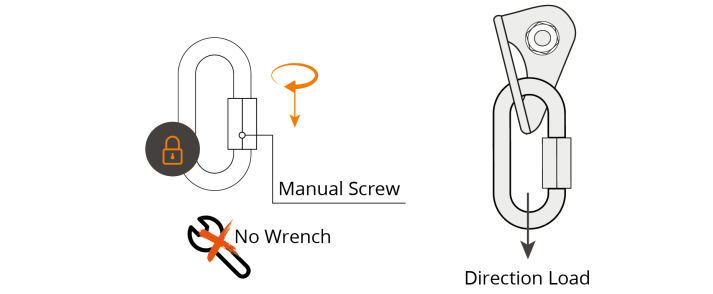
effective strenght / μέγιστη φόρτιση



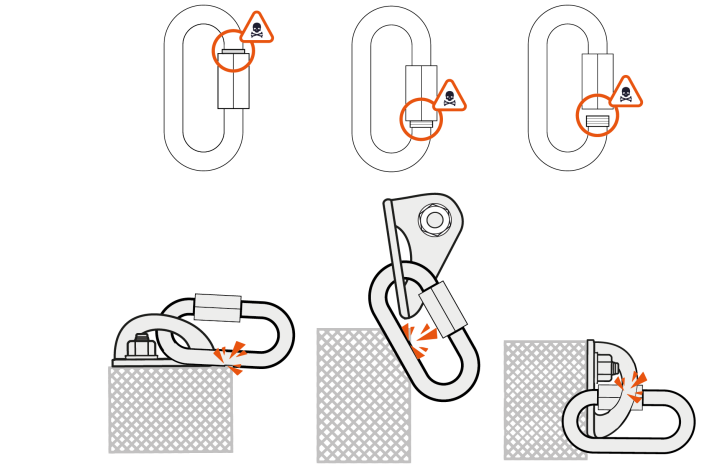
how to use / τρόπος χρήσης



APPROVED USE / ΟΡΘΗ ΧΡΗΣΗ



WARNING / ΠΡΟΣΟΧΗ



ADDITIONAL INFORMATION / ΠΡΟΣΘΕΤΕΣ ΠΛΗΡΟΦΟΡΙΕΣ

A. Lifetime	B. Acceptable T°	C. Cleaning	D. Drying	E. Maintenance
Unlimited Lifetime	+80°C/+176°F -40°C/-40°C	+30°C/+86°F max.	+30°C/+86°F max.	
F. Precaution for Use		G. Storage & Transport		
H. Modifications & Repairs		I. FAG - Contact		

Lappas S.A. | lappasclimbing.com