

lappas

climbing.com

D10 / D12

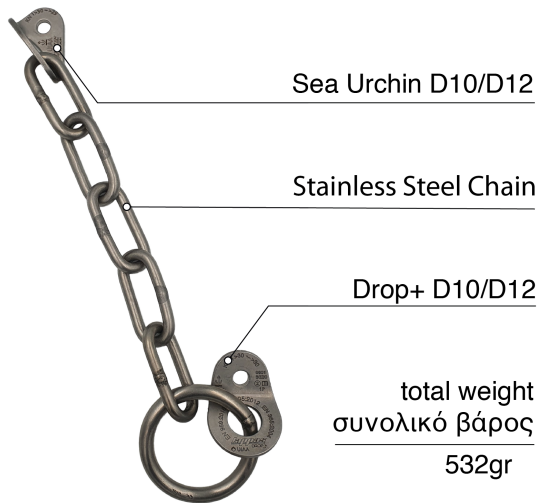
BELAY STATION Hybrid I

Belay Station Hybrid I - Stainless steel AISI 316L

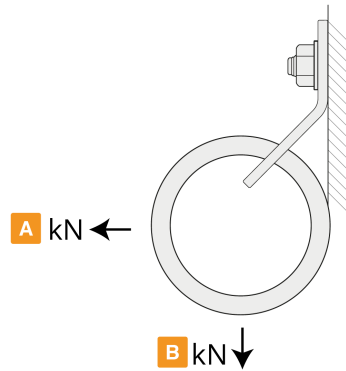
Σταθμός Ασφάλισης Hybrid I

technical sheet / εγχειρίδιο χρήσης

suitable for
κατάλληλο για



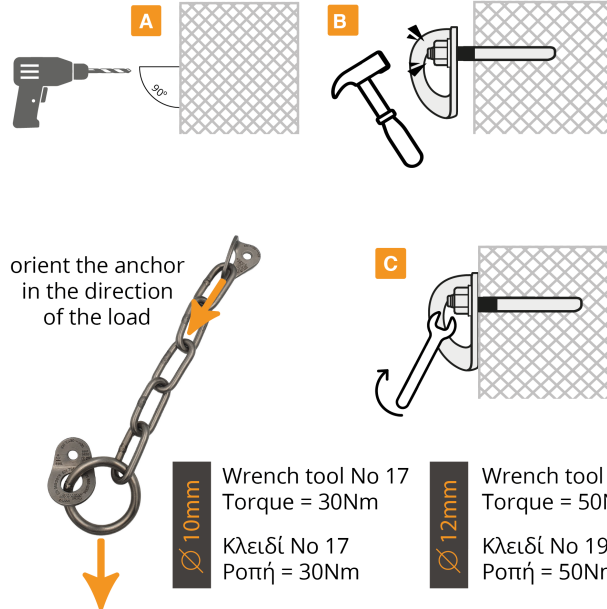
effective strenght / μέγιστη φόρτιση



A >30kN

B >30kN

installation / τοποθέτηση

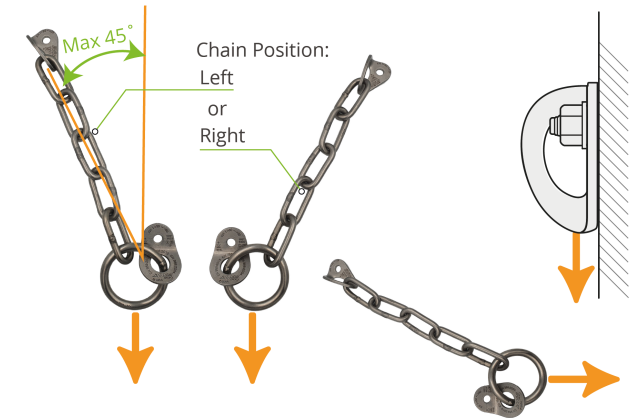


WARNING

The chain must not retain the ring but it will have to be spaced about 1cm, in this manner the ring will be free to move freely to accommodate the applied load.

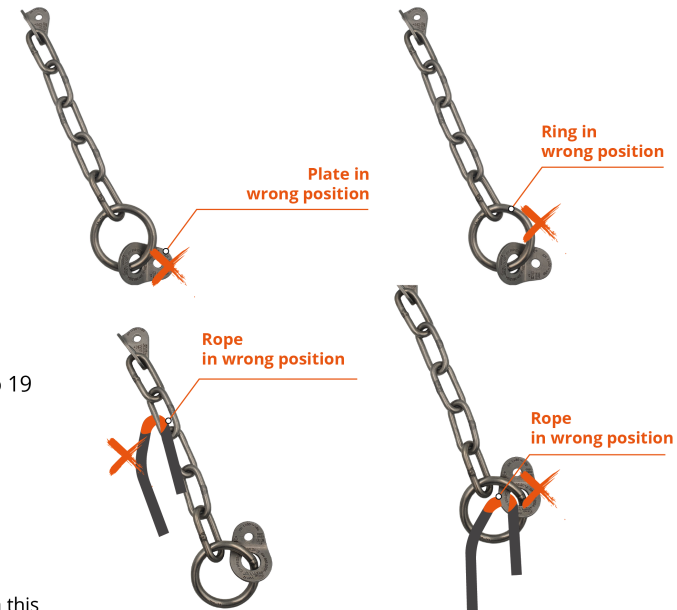
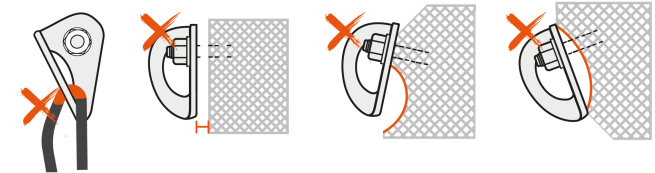


APPROVED USE / ΟΡΘΗ ΧΡΗΣΗ



WARNING : RISK OF ACCIDENT, INJURY OR DEATH

ΠΡΟΣΟΧΗ : ΚΙΝΔΥΝΟΣ ΑΤΥΧΗΜΑΤΟΣ, ΤΡΑΥΜΑΤΙΣΜΟΥ Ή ΘΑΝΑΤΟΥ



rock / βράχος

rope / σκοινί