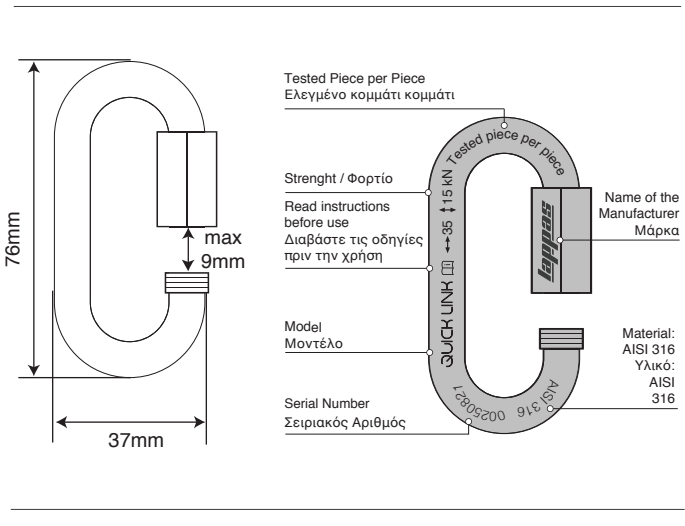
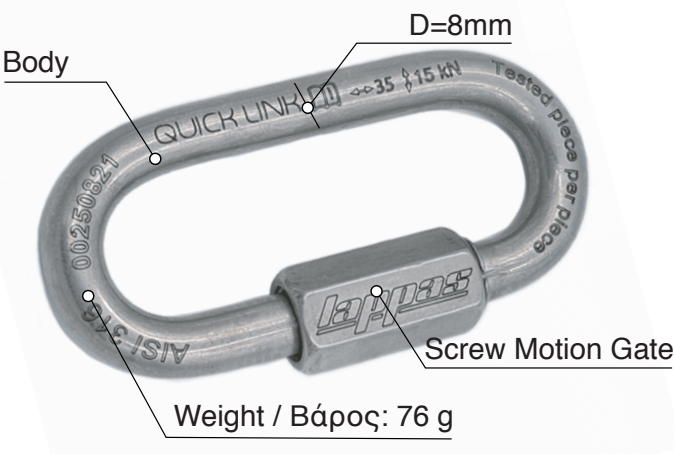




**Quick Link D8 (permanent connector)**  
**Stainless Steel AISI 316**  
 Μεταλλικός Σύνδεσμος D8-Ανοξείδωτο Ατσάλι AISI 316

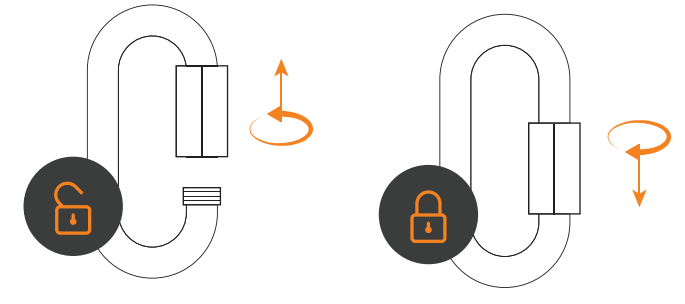
**Technical Sheet (latest version)**  
 Εγχειρίδιο Χρήσης (τελευταία έκδοση)



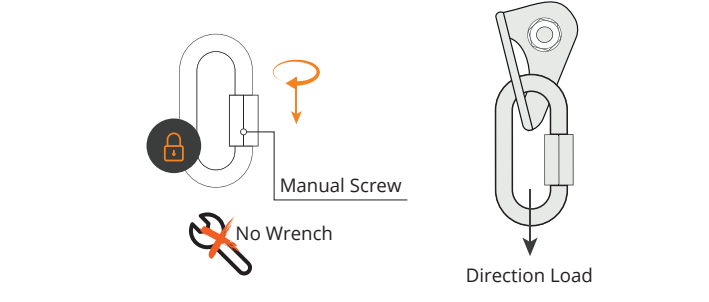
**effective strenght / μέγιστη φόρτιση**



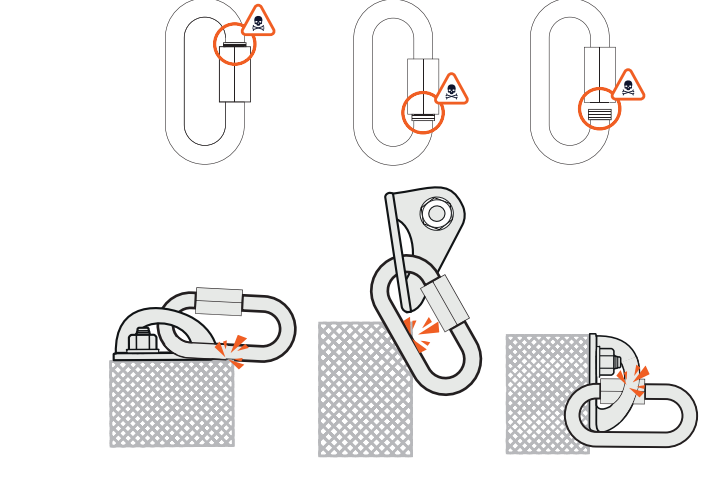
**how to use / τρόπος χρήσης**



**APPROVED USE / ΟΡΘΗ ΧΡΗΣΗ**



**WARNING / ΠΡΟΣΟΧΗ**



**ADDITIONAL INFORMATION**  
**ΠΡΟΣΘΕΤΕΣ ΠΛΗΡΟΦΟΡΙΕΣ**

| A. Lifetime                           | B. Acceptable T°            | C. Cleaning                       | D. Drying        | E. Maintenance |
|---------------------------------------|-----------------------------|-----------------------------------|------------------|----------------|
| Unilimited Lifetime                   | +80°C/+176°F<br>-40°C/-40°F | +30°C/+86°F max.                  | +30°C/+86°F max. |                |
| <b>F. Precaution for Use</b>          |                             | <b>G. Storage &amp; Transport</b> |                  |                |
| etc..                                 |                             |                                   |                  |                |
| <b>H. Modifications &amp; Repairs</b> |                             | <b>I. FAG - Contact</b>           |                  |                |
|                                       |                             | lappasclimbing.com                |                  |                |