

Lappas

climbing.com

Ø 10mm
Ø 12mm

GHOST+
+
ROCK ANCHOR

TECHNICAL SHEET

Rock Anchor - Stainless Steel AISI 316L

Πλακέτα Ασφάλισης - Ανοξείδωτο Ατσάλι AISI 316L

certificates
πιστοποιήσεις

EN 959:2018



suitable for
κατάλληλο για



Ø 10mm



Ghost + D10



Rock Anchor II D10
M10 x 90mm / M10 x 110mm
weight / βάρος: 222g / 232g

Ø 12mm



Ghost + D12



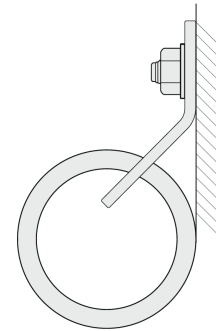
Rock Anchor II D12
M12 x 90mm / M12 x 110mm
weight / βάρος: 264,5g / 266,2g

resistance requirements - statics tests
απαιτήσεις στατικής φόρτισης

A EN 959:2018 15kN
UIAA GC 20kN

B EN 959:2018 25kN
UIAA GC 25kN

A kN ←

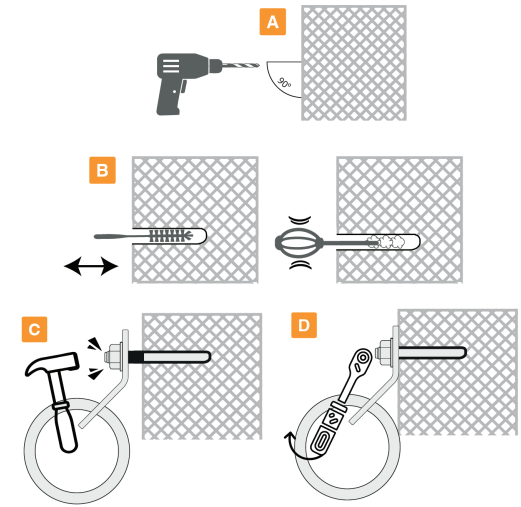


B kN ↓

effective strenght / μέγιστη φόρτιση

A 30kN **B** 30kN

installation / τοποθέτηση



•Check the exposed part of the hang fix. The nut has to be totally screwed on the hang fix but the hang fix has not to come out during installation. In this way you can check the correct depth of installation.

Ø 10mm

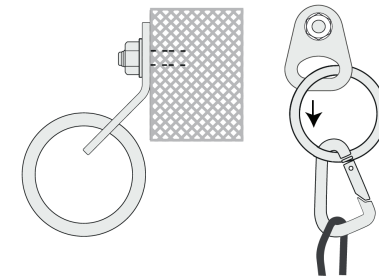
Wrench tool No 17
Torque = 30Nm
Κλειδί Νο 17
Ροπή = 30Nm

Ø 12mm

Wrench tool No 19
Torque = 50Nm
Κλειδί Νο 19
Ροπή = 50Nm



APPROVED USE / ΟΡΘΗ ΧΡΗΣΗ



rock / βράχος
rope / σκοινί



WARNING / ΠΡΟΣΟΧΗ

User has to connect its devices only to the integrated ring and has not to use the hole of the plate where the ring is mounted. Contact Lappas S.A. if you are not sure of the compatibility of your device.
Use Ghost+ and Rock Anchor only in case of compact rock (massif stone - granite).
Don't use it on soft rock (sandstone e.t.c.)

