



## Rock Anchor CORKSCREW 316L / Ti Gr2

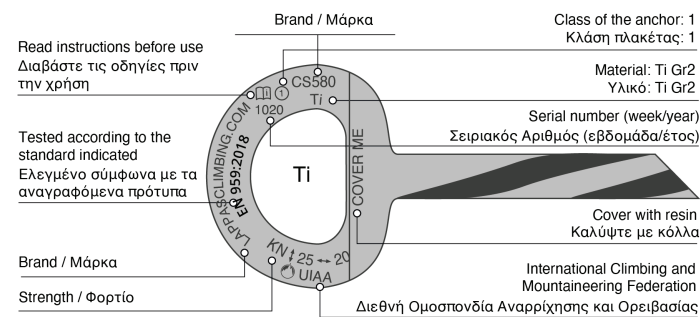
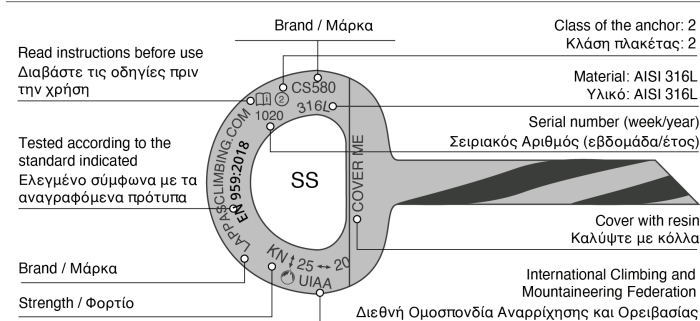
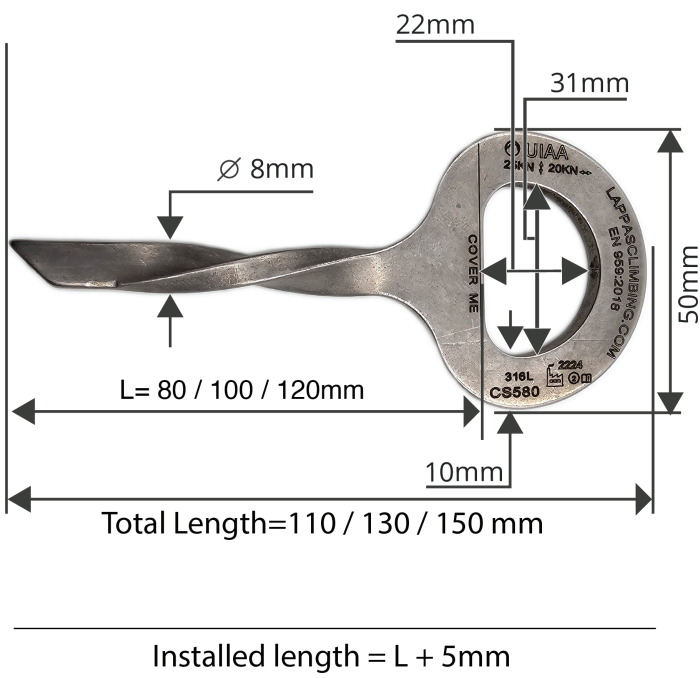
Χημικό Αγκύριο Ασφάλισης 316L / Ti Gr2

user's manual / εγχειρίδιο χρήσης

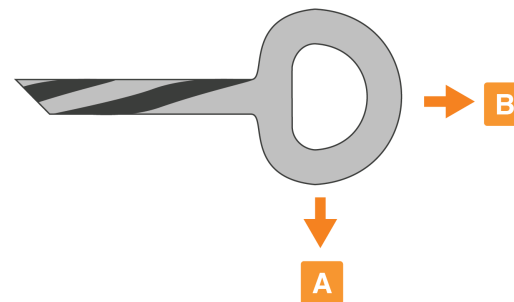
certificates πιστοποιήσεις **EN 959:2018** suitable for κατάλληλο για

**UIAA**

Climbing Caving Canyoning



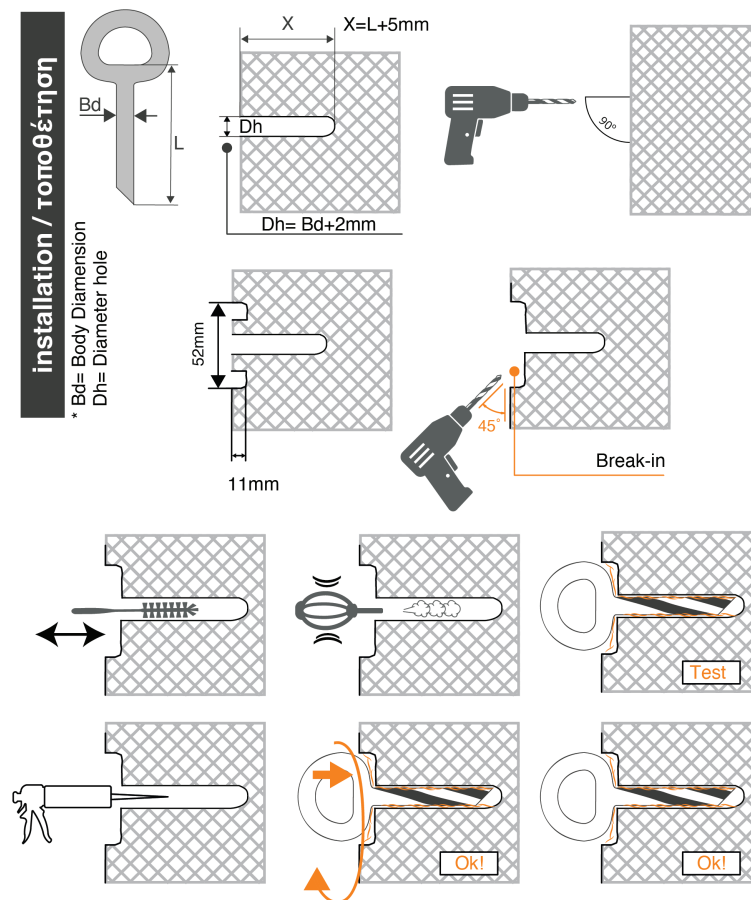
### resistance requirements - statics tests απαιτήσεις στατικής φόρτισης



<b>A</b>	EN 959:2018	25kN
	UIAA 123	25kN
<b>B</b>	EN 959:2018	15kN
	UIAA 123	20kN

### effective strength / μέγιστη φόρτιση

**A** 25 kN      **B** 20 kN

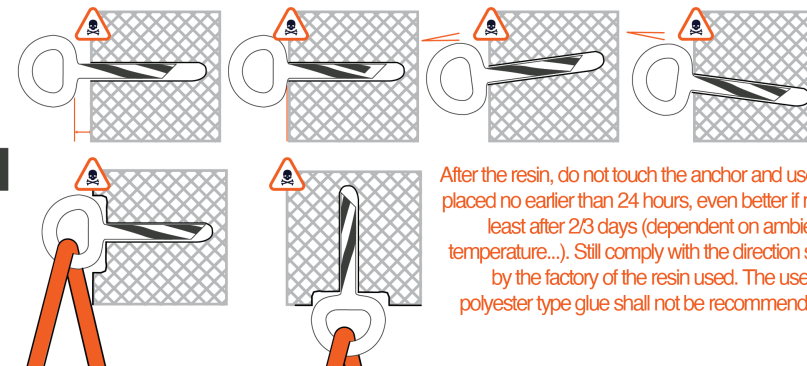


### APPROVED USE / ΟΡΘΗ ΧΡΗΣΗ



### WARNING / ΠΡΟΣΟΧΗ

RISK OF ACCIDENT / ΚΙΝΔΥΝΟΣ ΑΤΥΧΗΜΑΤΟΣ



After the resin, do not touch the anchor and use it placed no earlier than 24 hours, even better if not least after 2/3 days (dependent on ambient temperature...). Still comply with the direction set by the factory of the resin used. The use of polyester type glue shall not be recommended.